

NO LIMIT - NO RESERVE
AUCTION
Piece Meal to High Bidder

THE FINAL SCENE IN AN EPIC
OF 50 YEARS OF
TV & MOVIE MAKING

Hal Roach Studios

8822 WEST WASHINGTON BOULEVARD

1 Block West of National; East of Robertson Boulevard

CULVER CITY (L.A.), CAL.

*A Collection of Nearly Half a Century of Major Studio
Paraphernalia and Props*

Sound and Film Equipment
Spotlights and Stage Equipment
Woodworking and Machine Shops
Draperies Department — Draperies
Carpets — Mirrors — Paintings
Theatres — Still Departments
Paint Booths — Breakaway Dept.
Cafeteria and Kitchen Equipment
Booms — Dollies — Editing Equipment
Complete Special Effects Department

Costumes — Wardrobes
Art Objects — Antiques
Still Pictures — Books
Furnishings of every
Period and Type
Millions of Props — Sets
Fire Engine — Trucks
Executive & Office Furn.
Buildings to move!
Sound Tracks — Scripts

PUBLIC PREVIEW JULY 24, 25, 26, 29, 30, 31

SUNDAY, JULY 28 - Noon to 4:00 P. M.

10:00 A. M. to 4:00 P. M.

WED., THU., FRI. MON., TUES. WED.

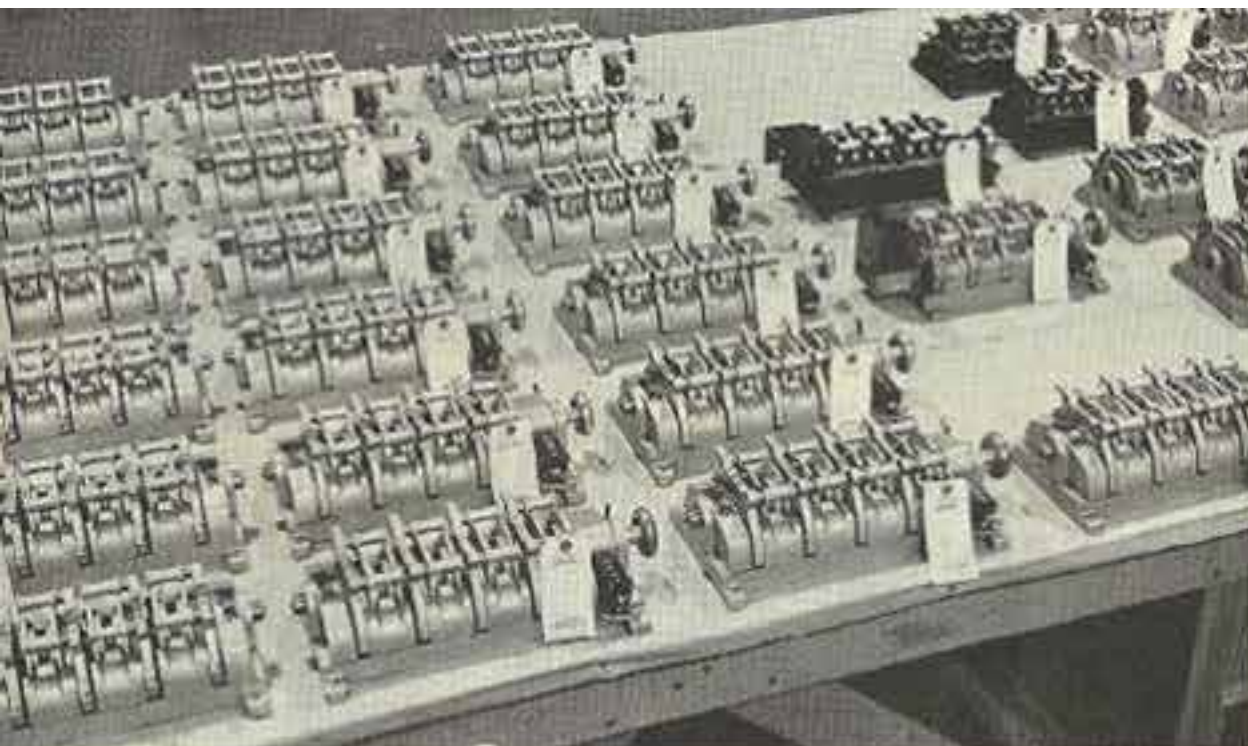
WED., THU., FRI. MON., TUES. WED.

By Order of **LIPSETT DIVISION — LURIA BROS. & CO., INC.**
who will DEMOLISH the STUDIOS after the AUCTION

Sale Under Direction of
Milton J. WERSHOW Co.

THE MOST RESPECTED NAME IN THE AUCTION FIELD

SCENE: 10 TAKE: FINAL
4-DAY AUCTION
THURS. - FRI. - SAT. - SUN.
AUG. 1-2-3-4
Starting 10 A.M. Daily



Synchronizers and Counters



Moviolas and allied equipment

THE END...the end of an era... Hollywood's Oldest, Continuously Operated Movie and TV Studio Goes Piece-Meal At AUCTION PLAN TO ATTEND!

For four days, beginning Thursday, August 1st, and continuing until all is sold, the multi-million dollar facilities of the famed Hal Roach Studios in Culver City, Calif. will go at Public Auction with Milton J. Wershow Co., conducting the sale.

Within the 14½ acres are sound stages and sets plus the hard-core equipment for producing motion picture and TV films with sound—amassed in nearly 50 years of continuous production.

Yet, all is neither old nor nostalgic in the studio. Much of the equipment, props, lights, sets, etc. was purchased in recent years. Hal Roach Studios were in operation until Feb. of 1963 as the pioneer TV production studio in the area and its stages were leased to both independent movie companies and TV producers up to its closing.

There is nostalgia here, it is true. But there are also sizable quantities of desirable equipment which can be put to profitable and immediate use wherever plays are staged, films produced or TV series put on film and tape.

As soon as the auction is complete, demolition of the buildings and everything above ground will begin under the direction of the Lipsett Division - Luria Bros. & Co., Inc. This, too, provides an opportunity for bidders to acquire such unusual items as fireproof doors, window sash, ceiling lights, costly wall wood panelings, etc. which must be sold. Even many of the buildings may be removed from the premises for re-erection and use elsewhere.

Antique dealers and collectors, interior decorators and art object seekers will find a wealth of unusual and valuable items—many of which will have to be discovered within the display rooms at the auction, since it is impossible to list everything. Plan to attend the auction... Thurs., Fri., Sat. and Sunday, Aug. 1, 2, 3, and 4, 1963, starting 10 a.m. each day at Hal Roach Studios, 8822 W. Washington Blvd., Culver City (L.A.) Calif.

We'll be looking forward to greeting you there personally.

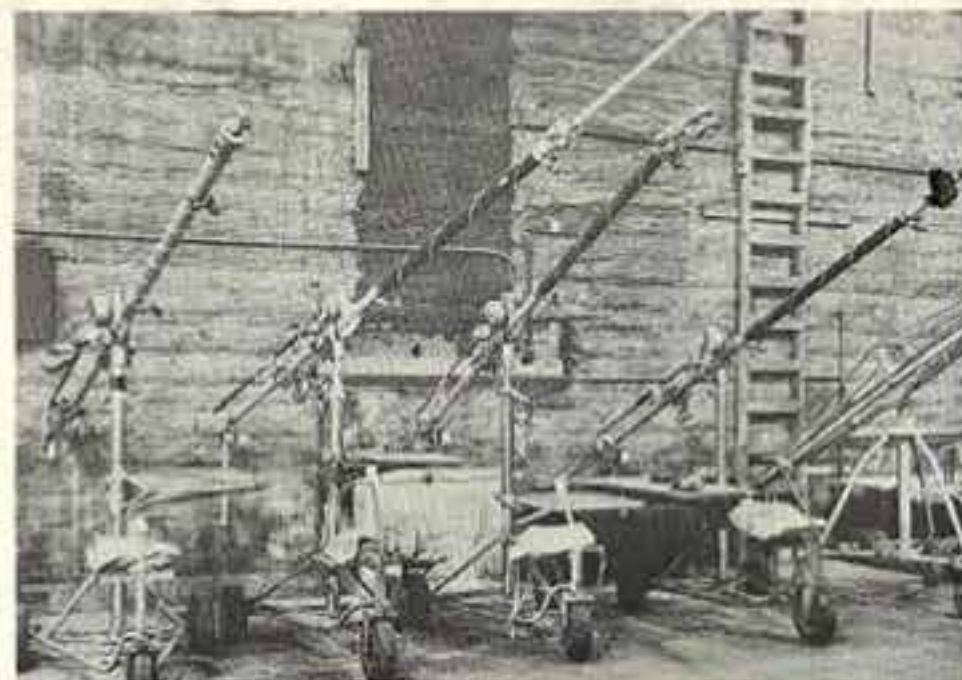
Cordially,

Milton J. Wershow
Milton J. Wershow

TERMS OF SALE

1. Everything will be offered in units of piece, pound, foot, to the highest bidder.
2. 25% deposit required upon award of bid; balance to be paid before the removal of merchandise from the premises, within three weeks from date of sale unless otherwise satisfactory arrangements are made in advance with the auctioneer. Cash, certified checks, personal or company checks or irrevocable purchase orders are acceptable.
3. While quantities and descriptions in this catalogue are believed to be correct, there are no guarantees and the auctioneer, owners or advertising counsel will not be held responsible for advertising discrepancies or inaccuracies.
4. Everything will be sold on an "as is—where is" basis. The auctioneer reserves the right to group lots, make lots smaller or add to or delete at his option.
5. All sales final. The responsibility and cost of removal of purchases remain with the purchaser, although every effort will be made to facilitate removal of purchases. Quantities must be checked before removal. No adjustments to be made in quantities after merchandise is removed from the premises.
6. Copies of our regular terms and conditions will be posted on the premises at the time of sale.

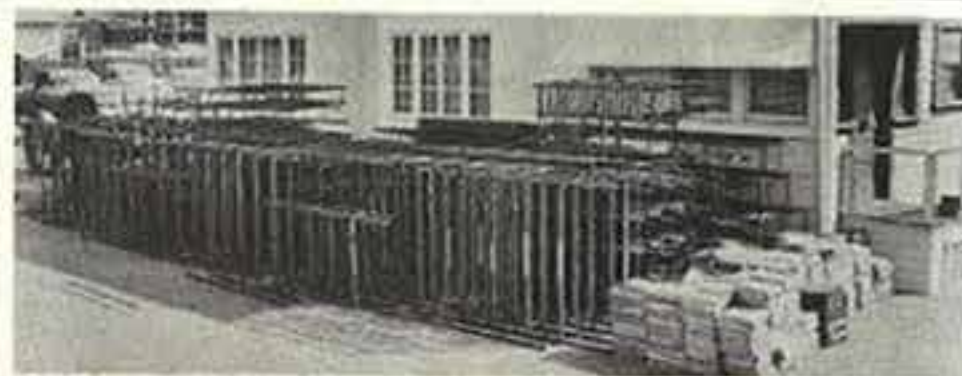
We hope you enjoy our methods and make advantageous purchases.



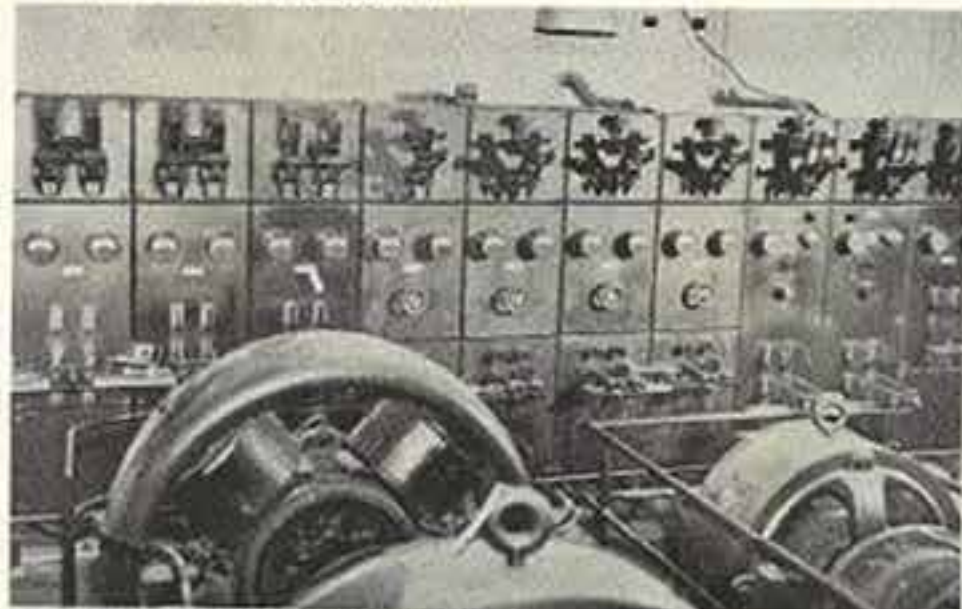
Portable Mike Booms

contents

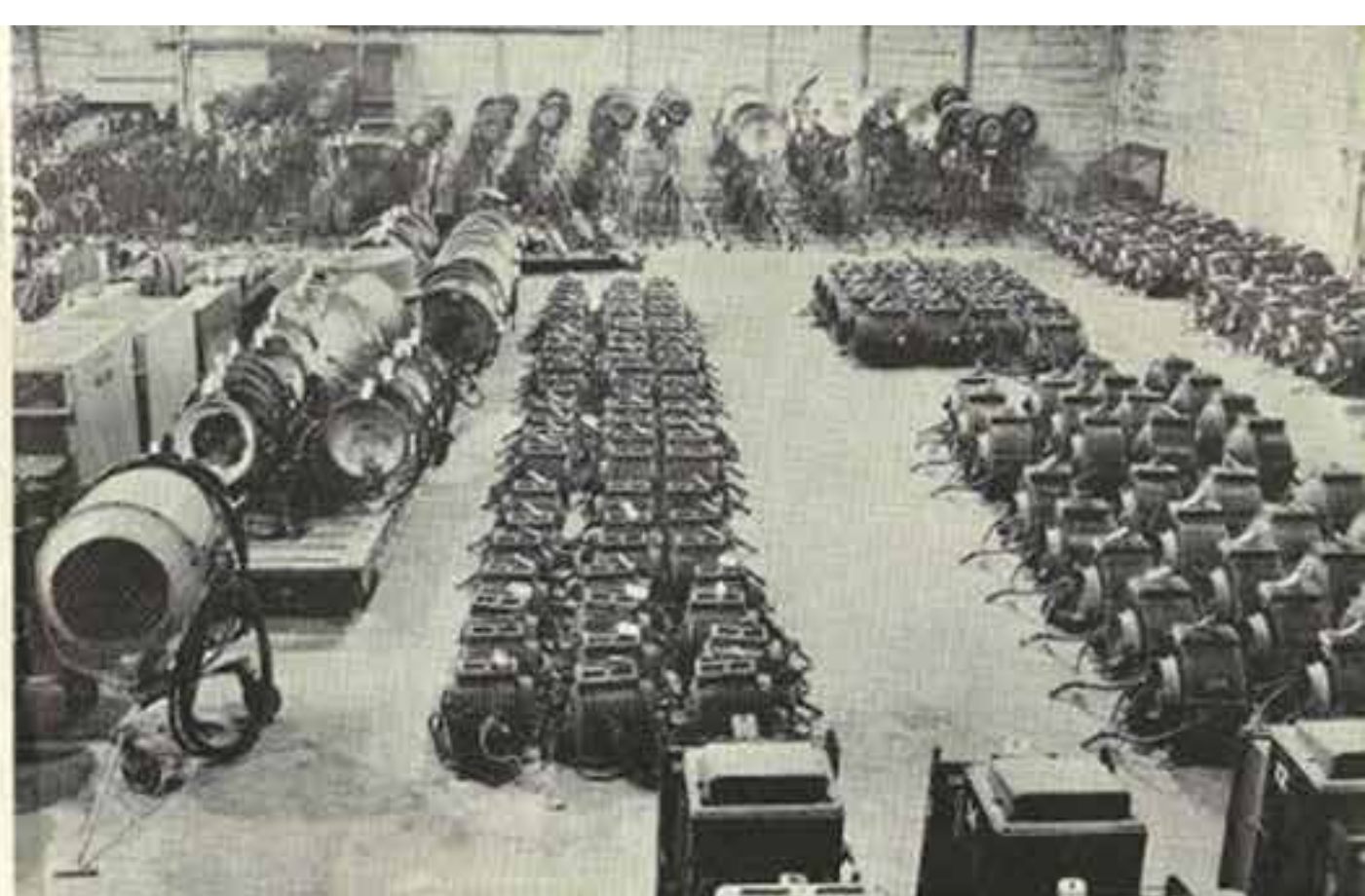
Motion Picture Cameras	3	Props	5
Camera Accessories	3	Sound Dubbing	5
Projectors	3	Machine Shop	6
Film Storing Equipment	3	Sheet Metal Shop	6
Lights and Accessories	3	Paint Mixing Equip.	6
Precision Printing Equip.	3	Forge & Welding Shop	7
Sound Projection Theaters	4	Air Compressors	7
Power Supply	4	Garage Equip.	7
Power, Electrical Equip.	4	Cafe and Restaurant Equip.	7
Bldgs. & Components to Move	4	Woodworking Dept.	7
Stage & Set Equipment	5	Rolling Stock	7
Grip Equipment	5	Supplies & Tool Crib	7
Draperies, Curtains, Equip.	5	Shop Equipment	7
Musical Instruments	5	Office Equipment	7
Wallpaper & Paint Dept.	5	Executive Suites	7
Plaster Mould Dept.	5	Office Machines	7
Special Effects	5		



Portion of Film Storing Equipment



Motor Generator Set & Control Panels



Stage and Spot Lights For Every Use

EVERYTHING FOR MOVIE-MAKING, TV FILMS AND STAGE PRODUCTIONS GOES PIECE-MEAL AT YOUR BID!

motion picture cameras

(See Photos)

- MITCHELL 35mm BNC-23 Motion Picture Camera with complete complement of lenses, accessories, etc.
- MITCHELL 35mm NC-4 Motion Picture Camera with lenses, accessories, etc.
- MITCHELL 35mm NC-5 Motion Picture Camera with lenses, accessories, etc.
- BELL & HOWELL 35mm Motion Picture Camera with mounting for Matte Shot and 50mm lens.
- BELL & HOWELL 35mm Motion Picture Camera mounted on Animation Stand with Back Projection, (2) Baby Jr. Lamps with built-in Fans, Cam Stop Motion, motor and controls.
- BELL & HOWELL 35mm Motion Picture Camera mounted on Lathe Bed with Projection for double printing, camera door plate with lens for viewing through camera.
- ANIMATION STAND with (3) Baby Jr. Lamps with built-in fans.
- (2) EYEMO 35mm Standard Automatic Motion Picture Cameras.

camera equipment (See Photos)

- MOVIOLA Film Viewer, Mod. UD-20-S.
- (16) MOVIOLA Film Viewers, Mod. UC-20-S.
- MOVIOLA Film Viewer, Mod. UCPS.
- (3) MOVIOLA Film Viewers, Mod. UC.
- BELL & HOWELL Revolving Lens.
- MOVIOLA Film Viewer, Mod. UDS.
- (7) ASSORTED RECORDING & RERUN Units.
- (30) Pairs of Hand Rewinders.
- (27) Hand Rewinders with tables and lights.
- (20) ASSORTED 35mm Film Synchronizers.
- EASTMAN Film Numbering Machine.
- HOLLYWOOD Power Film Rewinders with table and controls.
- (5) BELL & HOWELL 35mm Splicers.
- PORTABLE H.D. Camera Boom with pneumatic tires, electrics and controls.
- (4) PORTABLE Velocator Camera Trucks.
- (5) PORTABLE Mike Booms.
- (6) PORTABLE Supply Carts.
- (60) Assorted Film Racks, ALL STEEL.
- HEAVY DUTY Camera Tripod.
- LARGE QUANTITY AND ASSORTMENT, TOO NUMEROUS TO DETAIL INDIVIDUALLY, of Camera, Radio, TV and Sound Supplies, Worcal Gear Heads, 35mm Film Reels, Straight Heads, Mikes, 100's of Magazines.
- TREMENDOUS QUANTITY OF NEW and Erasable Used MAGNETIC TAPES.

projectors

- BELL & HOWELL 16mm Projector.
- BELL & HOWELL 16mm Projection Head.

film storing equipment

(See Photos)

- Dozens of 25 and 27-TIER SHELF CAN VAULT RACKS.
- Hundreds of 5, 6 and 7-TIER ANGLE STEEL FILM RACKS.

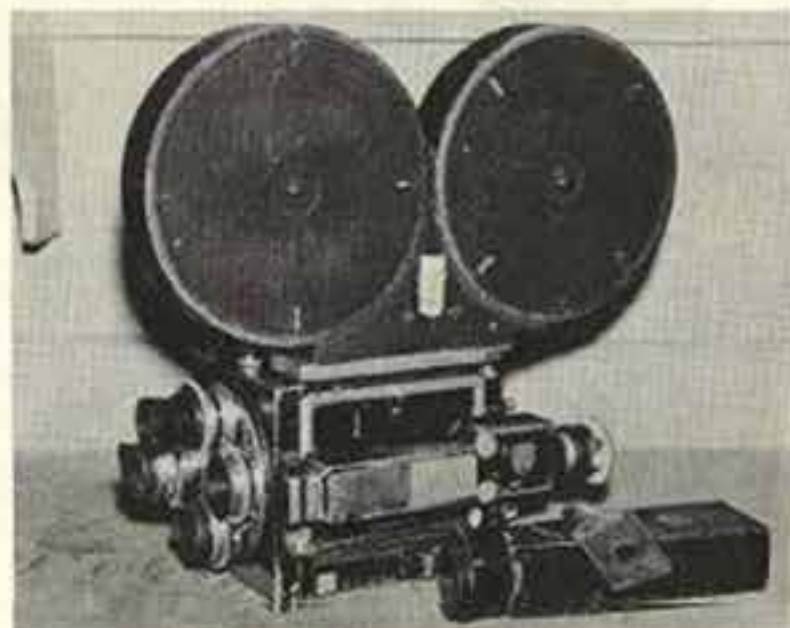
lights and accessories

(See Photos)

- (4) TENER SOLAR SPOTS Type 416 Lights with portable stands and cables.
- (47) TENER SOLAR SPOTS Type 412 Lights with portable stands and cables.
- (25) TENER SOLAR SPOTS Type 406 Lights with portable stands and cables.
- (10) M.R. SP Type 214 Lights with portable stands and cables.
- (28) M.R. JR Type 210 Lights with portable stands and cables.
- (10) M.R. SKYLITE 5K Lights with portable stands and cables.
- (6) M.R. SKYLITE 2K Jr. Lights with portable stands and cables.
- (6) M.R. SKYLITE Style 2 K, with portable stands, cables.
- (142) M.R. SKYLITE 2-K Conversion Lights with cables.
- (21) M.R. Style 214 SR. Lights with cables.
- (66) M.R. Type 210 Spot Lights with cables.
- (14) M.R. SKYLITE 2-K Lights with cables.
- (22) M.R. SKYLITE 5-K LIGHTS with cables.
- (8) M.R. Sky Pan Spots.
- (2) M.R. Type 90 Portable High Intensity Arc Lights.
- (13) M.R. Type 170 Arc Lite Spot Lights with portable stands and cables.
- (5) M.R. 80 Amp. Portable Rotary Arc Lamps with cables.
- (18) M.R. Type 40 Portable Du-Arc Lamps with cables.
- (12) M.R. 24" 5000 Watt Sun Spot Lights with cables.
- (7) Wagwags with portable stands and cables.
- (12) M.R. Style 224 24" Spot Lights with cables.
- (18) M.R. Style 226 24" Spot Lights with cables.
- (38) M.R. Double Bulb Spot Lights, Type 23, with portable stands and cables.
- (4) M.R. Single Bulb Spot Lights with portable stands and cables.
- (23) ASSORTED Spot Lights w/portable stands, cables.
- (26) Assorted M.R. Power Control Units.
- (9) Assorted Vitrohm Dimmers with portable stands, 350 to 3000 Watts.
- (12) Assorted 4 Ft. Lights.
- 1000's OF FT. OF ASSORTED ELECTRIC CABLE AND ELECTRIC CORD.
- 100's OF ASSORTED NEW LIGHT BULBS from 10 Watt to 10,000 Watt capacity.
- (12) Assorted Portable Lamp Supply Cabinets.
- TREMENDOUS QUANTITY AND ASSORTMENT of Light Stands, Light Filters and misc. stage and theatre lighting equipment.

precision printing equip.

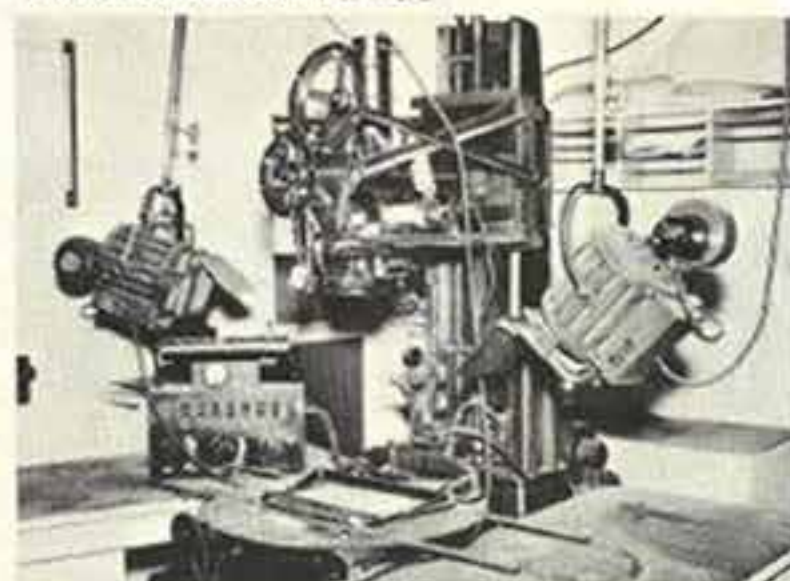
- BELL & HOWELL 35mm Continuous Printer, Model "D," complete with special blower to cool, large 250 W. lamp, variable voltage control 125 Volts, 4.4 to 1.6 amps with meter, A.C. power control, special light proofed 1000 ft. film magazine.
- CINEX TESTING DEVICE for 35mm film with special high voltage D.C. Mercury Lamp, optical and cooling system, pair of special rewinds with control box and wiring.
- SPECIALLY BUILT DUPLEX PRINTER for 35mm film, equipped with interchangeable BELL & HOWELL Camera with two movements, one for color and one re-vamped movement for shrunken film, triple light facilities and controls with automatic light change unit, top film magazines and control boards, 2-head rheostat controls and all wiring.



Mitchell NC-4 35mm Movie Camera



Mitchell BNC-23 35mm Camera

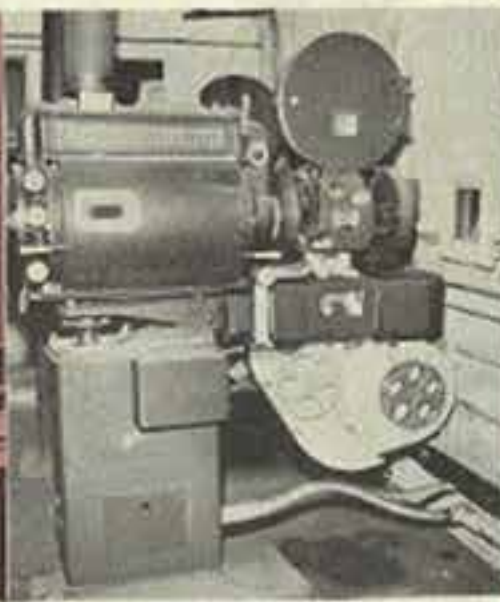


Animation & Special Effects Camera





One of Three Preview Theaters



Movie Projector with Sound



Moviola UD-20-S



Moviola with Rewind



Sound Tracks & Special Effects

STUDIO PROJECTION THEATRES

(2) Studio Preview Type 35mm Projection Units with (2) Century Projection Heads complete with projection lenses; (2) RCA Magnetic Projection Sound Heads; WE Double Film Receiver; (2) Peerless Magna-Arc Hi-Intensity Lamps; Bases, 87C and 598 Amplifiers; (2) Kri-Tron Mercury Arc Rectifiers; (2) Simplex Upper Magazines; (2) Altec Power Supply sources for exciter lamps; P.A. System with mike to theatre; plus... (2) Booth Sound Boxes; Booth Fader with wiring; (2) Motor Distributors; (2) Motor Control Boxes; (2) Relay Systems; Synchronized Wiring System for both projectors with dowser system, etc. Also Electric Rewinds; (2) Bausch & Lomb Cinemascope attachments, spare parts, etc.

Altec 100 Watt Theatre-type Loud Speaker with dividing network, baffles and wiring.

Yatone Matte Seamless Screen with drape and supports, 9'9" x 12'11".

(33) Padded Theater Seats, Carpeting; Consoles plus miscellaneous auditorium and theatre accessories and equipment. (See Photos)

theatre #2

(2) STUDIO PREVIEW type 35mm Projection Units with (2) Simplex Standard Projection Heads complete with lenses; (2) Simplex Upper Magazines; Photophone Sound Head with RCA double film attachments; (2) RCA Magnetic Projection Sound Heads; (2) Peerless Magna-Arc Hi-Intensity Lamps; (2) Simplex Bases; RCA Amplifier System; Brenwood Type VT-50 Motion Picture Projector Rectifier; Utility Hi-Intensity 4-tube Rectifier; Intercommunicating System to theatre.

Also: Golde DH Power Film Rewind; seats, lamps; 9' x 7' Snow White Perforated Projection Screen; Loud-speaker; Stage Lights; Carpeting, etc.

theatre #3

(2) Studio Preview Type 35mm Projection Units with (2) Simplex E-7 Projection Heads; (2) Simplex Upper Magazines; (2) Photophone Sound Heads with RCA double film attachments; (2) Peerless Magna-Arc Hi-Intensity Arc Lamps; RCA Amplifier System for both projectors; D.C. Current Supply; Rectifiers; Booth Sound Boxes; Intercommunicating System to theatre. Also: Power Rewind; Upholstered Seats; Lights; Drapes; Carpeting; 52' x 70' Silver Screen, etc.

power supply plant

G.E. 200 H.P. Motor Generator Set with (2) 125 KW Generators, compensators and switches.

WESTINGHOUSE 200 H.P. Motor Generator Set with (2) 50 KW Generators, compensators and switches.

G.E. 450 H.P. Motor Generator Set with (2) 150KW Generators and Starting Panel.

WESTINGHOUSE 3 H.P. Motor Generator Set with (2) 1 1/2 KW Generators.

(2) Silver Stat Regulators.

(10) Assorted Transformers, 15 KVA to 50 KVA.

(11) SECTIONS OF SWITCH PANELS.

power, electrical equip.

WESTINGHOUSE 20 KW M.G. Set with 30 hp motor.

WESTINGHOUSE 5 KW M.G. Set with 15 hp motor.

WESTINGHOUSE 3 KW M.G. Set with 5 hp motor.

LARGE QUANTITIES OF ELECTRICAL WIRE, CONDUIT, CABLE, etc.

POWER SUPPLY CONSOLES for Air Compressor Rooms, M.G. Sets, and Studio Lighting Systems.

(2) Simpson Hom-meters; Western Amp Meter; Electronic Voltmeter; Heathkit Battery Eliminator; Hewlett Distortion Analyzer; Mod. S-10-A Pocketscope; Remote Control Boxes; Heathkit Condenser Checkers; Continuity Meter; Triplett D.C. Milliamphere; Supreme Mod. 504-A Tube Tester; Skytronic Portable Amplifier; (8) Assorted Power Units; etc.

Quantities of Fuses, Condensers, Electrical Supplies; Outside Lights; Switch Boxes; Electric Wire; Motors; M.G. Sets throughout the studio.

still photo department

A complete Still Photo Department used in Studio Still Work with Developing Tanks, Printers, Enlargers, Dryers, Negative Files; Photo Straighteners, etc., etc.

8" x 10" COPYING CAMERA

OMEGA Type D-11 Enlarger.

AUTOMEGA D-3 Enlarger.

ELOOD 18" x 20" Enlarger.

EASTMAN Print Straightener.

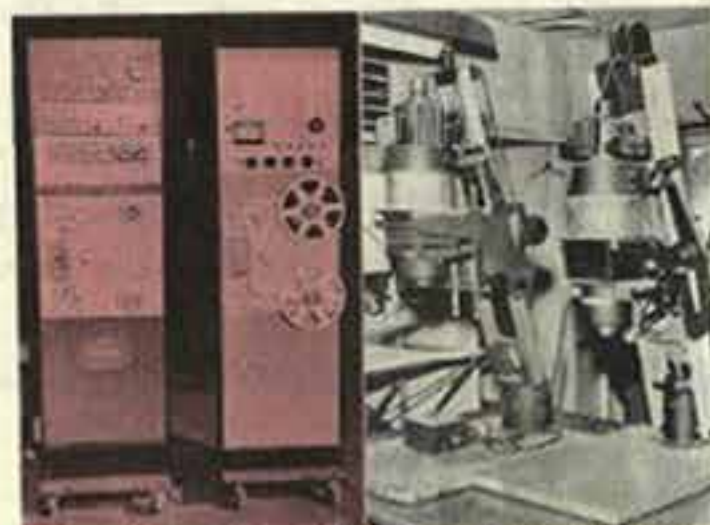
fire equipment

100's of Extinguishers and 1000's of ft. of H.D. Fire Hose throughout the Studio.

BUILDINGS To Be Moved

Sound Proof Doors... Windows
Sash... Building Components

14 1/2 acres are covered with studio and office buildings, some easily moved. Throughout: lights, doors, windows, sash, and other building components will be offered at the auction — in lots to suit bidders.



Stancil Hoffman Record & Play-back Unit

2 Omega Enlargers



Portion of the Power Supply Units



Spots and Arcs



More of the Portable Lights

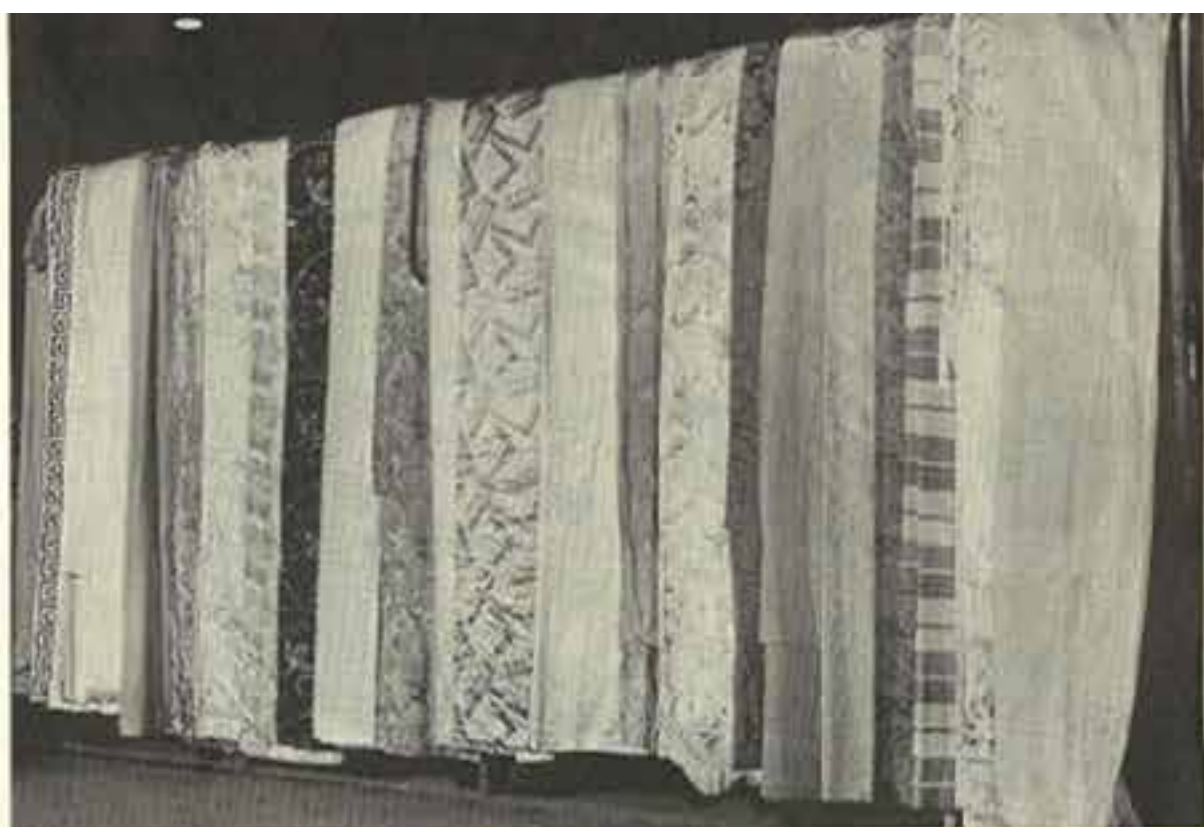


Sound Department Recordings





Outdoor Sets & Street Scenes



Over \$100,000.00 in Draperies, Curtains, etc.

A "MUST ON YOUR AUCTION AGENDA"

50 YEARS COLLECTION AND ASSORTMENT OF Studio and Stage Props

Everything from Our Gang Comedy Kid's toys to libraries; kitchen equipment; typewriters; telephones; bric-a-brac; etc.

HAL ROACH STUDIO was known never to throw anything away — hence this is a storehouse of collector's items — irreplaceable antiques & period pieces — and such diverse items as: Guns, Antique Telephones, Glassware, Distortion Mirrors, Bows & Arrows, Lamps, Balls, Animals, Planes, Clubs, Bottles, Baskets, Kitchen Utensils, Instruments, License Plates, Spears, etc., etc., etc.

stage, set equipment

MORE THAN 1000 ASSORTED FLATS, Columns, Set Display Units, Ornamental Iron (some imported); Doors of every type and description; Windows; Fireplaces; Pilaster Walls, etc., etc.

ASSORTMENT OF LEADED GLASS — Flats; oval mirrors; Church decorations, etc.

over \$1/2 million value GRIP EQUIPMENT

Tremendous quantities of Reflectors and Stands; Camera Dollies; Interior and Exterior Diffusers; Camera Platforms; Lighting Scaffolds; Hangers; Chain and Hooks; Low and Hi Century Stands; Equipment Racks; Grip Boxes; Canvas Dressing Rooms; Stage Dressing Rooms; Portable Dressing Rooms; DAY & NIGHT STAGE BACKINGS; Tarps; Wall Jacks; Sewing Machines, etc.

approximately \$100,000.00 inventory DRAPERIES & EQUIP.

Hal Roach Studios were world famed for their drapery collection.

Approx. 250 pr. of ASSORTED COLOR CORRECTED DRAPES, Velvet, Satin, Velour, Silk, Cotton, Glo-sheen, Corduroy, Linen, Damask.

(78) ASSORTED VENETIAN BLINDS; (38) BED-SPREADS; (18) PUFF SHADES.

Approx. 3690 Yards Misc. Drapery Material.

LARGE QUANTITIES OF: Curtains, Pillows, Tablecloths, Scarves, Tassels, Cords, Tents, Awnings, Bolsters, Cornice Boxes, etc., etc.

100's of ASSORTED RUGS (Some Oriental).

TREMENDOUS QUANTITY OF CARPETS & CARPETING used on stage sets and throughout the studio offices, etc.

musical instruments

Baldwin and other Grands and Baby Grands; Studio and Upright Pianos used in studio recording sessions and for props.

wallpaper & paint dept.

Thousands of rolls of NEW and UNUSED wallpapers . . . of varied designs and qualities — used in studio work.

plaster mould dept.

Complete gas fired glue pot Heating and Drying System for Plaster Molds.

Tremendous quantities and assortment of Moulds and Matrixes used in making plaster cornices, shapes, designs, plaques, etc.

special effects props and equipment

Wind Machines, Wind Tunnels, Blowers, Wave Makers, Smoke Makers, etc., etc.

SOUND DUBBING STAGES

Complete Sound Dubbing Stages and Equipment — mixing panels, screens, orchestra stands, conductor's stands; plus many other items too numerous to list.

ADVERTISING PRODUCED BY
ELLIOTT W. WOLF

Pictures and Mirrors



Set Flats of Every Type



Set Flats, Sash Doors



These will be dismantled



More of the Draperies



Toys and Unusual Props



Props of Every type



These were used in Bar Scenes



Maintenance and Machine Shop (See Photos)

MONARCH 12" x 20" High Speed Engine Lathe with taper attach., 3-jaw chuck, steady rest, follow rest, face plate, threading attachment, motor and electric. Serial No. EE29384.

SOUTH BEND 13" x 6 FL. ENGINE LATHE with taper attachment, 3-jaw chuck, face plate, steady rest, threading attachment, motor and electric.

MONARCH 16" x 52" GAP ENGINE LATHE with 3-jaw chuck, face plate, steady rest, follow rest, threading attachment, motor and electric.

HARDINGE SINGLE OVERARM HORIZONTAL MILLING MACHINE with 6" x 25" Universal table, coolant system, power table, motor and electric.

SMITH & MILLS 20" CRANK SHAPER with 13" vise, Universal Knee, 5 H.P. motor and electric. Serial 3299.

DO-ALL Mod. ML-16" METAL CUTTING BAND SAW with butt welding, annealing and grinding attachment, speed indicator, motor, electric and controls.

RACINE 6" x 12" POWER HACK SAW with coolant system, 3/4 H.P. 3-phase motor and electric.

LEMPCO 60-ton Cap. HYDRAULIC PRESS.
BUFFALO 18" PEDESTAL DRILL PRESS with 1 1/2 H.P. 3-phase motor, 1730 RPM and electric.

HOEFER 18" Pedestal DRILL PRESS with 1 H.P. 3 phase 1720 RPM motor and electric.

WALKER TURNER 14" Bench Type DRILL PRESS with 1/2 H.P. 1-phase 1450 RPM motor, electric and table.

HOEFER 20" Pedestal DRILL PRESS with 3/4 H.P. 3-phase motor and electric.

(2) QUEEN CITY & MILWAUKEE D.E. GRINDERS with 3-phase and 1-phase motors.

Paint Department

15' x 30' STEEL PAINT SPRAY BOOTH with motor, blower, fans, etc.

Portable HALLET Tank Mounted Air Compressor w/ Wisconsin Gas Engine.

GILFILLAN Barrel Mixer with motor and electric.

8' x 3' x 4' Steel Degreasing Tank, gas fired, 2 Gallon Pressure Paint Pot; (11) Paint Spray Guns; Portable Fans; Air Hose, Brushes; Mixers; Paint Buckets; Ladders; Spray Cans; Tables; Rope Blocks; Lights; Fans, etc. etc.

Sheet Metal Equipment

PEXTO 53" FOOT SHEAR, 16 Ga. Cap. with Back gauges.

PEXTO Mod. 299B 46" CIRCLE SHEAR, 20 Ga. capacity.

PEXTO 7 FL. HAND BRAKE, #1002.

PEXTO 3-roll 36" HAND ROLL, 14/16 Ga. capacity.

PEXTO Model 622-E HAND CRIMPING MACHINE.

PEXTO #544 HAND CRIMPER.

PEXTO HAND FORMING TOOL.

Forge & Welding Shop

MAYER BROS. Little Giant #1895 Iron Worker with 2 H.P. 3-phase motor, foot trip and electric.

BADGER HEAVY DUTY SHEAR & PUNCH w/5 H.P. motor, foot trip & electric.

WHITNEY HAND PUNCH & SHEAR, on stand.

ELECTRIC BLACKSMITH FORGER, 40" x 40" with blower, tools and controls.

HOBART 200 Amp. Portable WELDER with ground cable and stinger.

VICTOR ACETYLENE SET with hose, tips, gauges & cart. Misc. Acetylene gauges.

ROSSFELD HEAVY DUTY HAND BENDER with Dies.

PORTABLE PIPE THREADING MACHINE with Dies.

Air Compressors

(2) INGERSOLL RAND 5 H.P. AIR COMPRESSORS, Tank mounted.

10 H.P. and many others.

Misc. Machinery

(3) GARWOOD SINGLE DRUM WINCHES with DC motor and electric.

STEAMASTER AUTOMATIC BOILER with motor, hose, tank, auxiliaries.

MISC. PUMPS, MOTORS, etc.

Garage Equipment

Hydraulic Auto Hoist; **Hartman Battery Analyser & Charger**, 100 Amps.; **Reco 6/12 V. Model 120 Charger**; **Lester 6 V. Battery Charger**.

LINCOLN Portable Lube & Grease Rack.

(2) Lincoln Oil Drain Dollies; **Blackhawk 6,000 lb. Cap. Floor Jack**; **(4) Assorted Oil Hi-boys**; **Champion Spark Plug Cleaner**, etc.

Quantity of Tire Tools, **Work Benches**, **Creepers**, **Shop Fans**, **Lights**, etc.



Monarch Engine Lathe



Comet Radial Saw



Oliver Table Saw



Smith & Mills Shaper

Cafe and Restaurant Equipment

(See Photos)

COLT Autosan Dishwashing Machine with motor, pump and table.

(2) GARLAND Gas Ranges; **S.S. Steam Table**; **Koch 6-door Refrigerator**; **Wol Deep Fryer**.

PERFECT Egg Boiler; **National Elec. Meat Chopper**; **Globe Slicing Machine**; **(3) Hamilton Beach Mixers**; **Dohrmeyer Food Mixer**; **Toastmaster 4-slice Electric Toaster**.

HEMCO Mixer; **King Cut-Shoestring Slicer**; **Griswold Twin Waffle Maker**; **Electric Bun Warmer**; **Richer Coffee Maker**.
8 FL. Stainless Steel Soda Fountain.

(7) Booths; **8' Show Case**; **12' Refrigerated Food & Pic Case**.

NATIONAL Electric Cash Register.

24-Stool HORSESHOE Counter.

(2) 8-Stool Counters; **(9) Pedestal type Tables**; **(7) Wood Tables**; **(35) Restaurant Chairs**.

Quantity of: Pans, **Stock Pots**, **Trays**, **Dishes**, **Cups**, **Glasses** and **Glassware**, **Napkin Holders**, **Salt & Pepper Shakers**, **Tea Pots**, **Ash Trays**, **Sugar Bowls**, **Pitchers**, **Dessert Dishes**, **Creamers**, etc. etc.



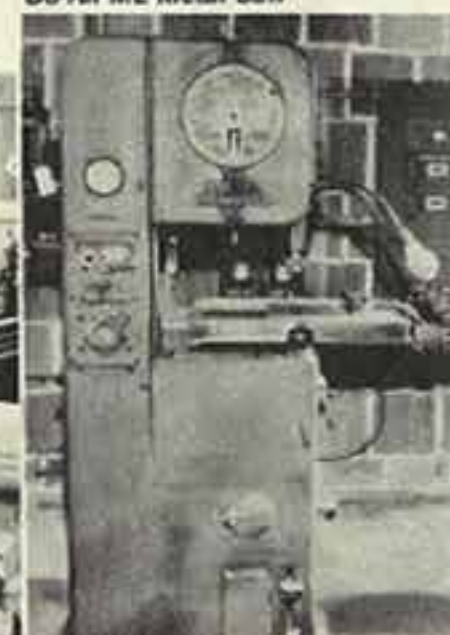
Sheet Metal & Machine Shop



Partial View of Woodworking

Do-All ML Metal Saw

Portion of Machine Shop



Cafeteria & Restaurant



Overall View Woodworking Shop





Portion of Office Machines



Section of Hal Roach office



Executive Companion office

Woodworking and Prop Making Equipment

WHITNEY #32 SURFACER 30"x 12" with 5 H.P. motor, controls and electric.

CRESCENT 20"x 8" SURFACER with 10 H.P. motor, compensator and electric.

AMERICAN 16" PLANER with 3 H.P. 3450 RPM motor and electric.

UNION COMBINATION TABLE SAW & PLANER with 8" table saw, 21"x 23" table, 6" Planer with 3/4 H.P. 3-phase motor and electric.

JONES SUPERIOR #52 30" BAND SAW with 30"x 38" table, 5 H.P. motor and electric.

EAGAN 34" BAND SAW with 30"x 33" table, 3 H.P. motor and electric.

27" BAND SAW with 20"x 24" table, 3 H.P. motor and electric.

C.H. & E. 20" BAND SAW with 20"x 20" table, 1 1/2 H.P. motor and electric.

CRESCENT 20" BAND SAW with 20"x 24" table, motor and electric.

WALKER TURNER 16" BAND SAW with 17"x 18" table, 2 H.P. 1-phase motor and electric.

OLIVER #270 15" TABLE SAW, 37"x 44" table, tilt arbor with 5 H.P. 3-phase motor and electric.

13" TABLE SAW with 42" x 60" table, 5 H.P. 3-phase motor and electric.

OLIVER TILT ARBOR 12" TABLE SAW with 41"x 44" table, 5 H.P. 3-phase motor and electric.

SAWS with 3 H.P. and 5 H.P. motors.

DE WALT 12" RADIAL ARM CUT-OFF SAW with 5 H.P. motor.

DRIVER 24" THROAT JIG SAW with 1-phase motor.

BEACH JIG SAW with 2 H.P. 3-phase motor.

24" THROAT JIG SAW with 1/2 H.P. 3-phase motor.

EPCO 8" MITRE SAW with 3/4 H.P. 3-phase motor, electric and table.

WALKER TURNER 9"x 36" WOOD LATHE with 3-jaw chuck, face plates, tool rest, tail stock, motor and electric.

14" SWING WOOD LATHE with 4-jaw chuck, tool rest, 3 H.P. motor and electric.

SENECA 10"x 24" ENGINE LATHE with 3-jaw chuck, face plate, steady rest, 1/2 H.P. 3-phase motor and electric.

SINGLE SPINDLE DRUM SANDER with 1/2 H.P. 3-phase motor and electric.

(12) FLEX SHAFT AND D.E. PEDESTAL GRINDERS AND DISC SANDERS with motors and electric.

AMERICAN 2-SPINDLE SHAPER with 54" x 38" table, 5 H.P. motor and electric.

RODGERS SINGLE SPINDLE SHAPER, 18" x 24" table, 1 H.P. 3-phase motor.

BENCH TYPE 4" PLANER with 1/2 H.P. 3-phase motor and electric.

BEACH 6" HORIZONTAL BELT SANDER with 8" Belt, 2 H.P. 3-phase motor.

SANTA FE DOUBLE SPINDLE BORING MACHINE with 1 1/2 H.P. 3-phase motor and electric.

Rolling Stock

CASE Size 36 ANTIQUE STEAM BOILER. (See Photo)

1930 CAD. FIRE TRUCK with V-8 engine, Fire Hose, 4-speed trans.

1956 FORD C-600 Stake Truck, 2-axle, 15 ft. bed, V-8 engine, 4-speed trans., heater, 9x22.5 tires and wheels.

1954 FORD C-750 Stake Truck, 2-axle, 21 ft. bed, V-8, 4-speed, heater, side racks, 9:00x20 tires and wheels.

1947 GMC Flat Bed, 2-axle, with 15' bed, 6 cyl. 4-speed trans., side racks, 7:50-20 tires and wheels.

(3) FAEGOL Mod. 44 Twin Coach 44-Passenger Busses, 10:00x20 tires with Air Brakes.

1956 FORD F-100 V-8 1/2 Ton Panel with Fordomatic trans., heater.

1955 FORD F-100 V-8 1/2 Ton Panel with standard trans., heater.

1946 GMC 6 cyl. 1/2 Ton Panel with 4-speed transmission.

1955 FORD F-100 V-8 1/2 Ton Pickup with std. transmission, heater.

1953 FORD Mainline 4-dr. Sedan, 6 cyl. with std. transmission, radio, heater.

1929 FORD TOW BUGGY with 4 cylinder engine.

CLARK Pneumatic tired Truck Tractor with 6 cyl. gas engine.

CLARK Pneumatic tired 4,000 lb. Fork-lift, low mast.



Note Hewn Beams in Roach office

executive and office furniture, machines and equipment (See Photos)

There were 100 separate offices in the studios — all were furnished — most were carpeted. Many of the Producers' and Executive Offices were in expensive matched decor — with top leather furniture and costly, attractive desks. Below is a generalized listing of the furniture and other office equipment.

Executive Producer's Suite

72" Solid Walnut Desk with Blue Swivel Upholstered Arm Chair.

8 Ft. Solid Walnut Conference Table with (8) Blue Upholstered Arm Chairs.

8 Ft. Blue Leather Sofa with Matching Blue Arm Chairs.

Lamps; 54" Coffee Table; End Tables; Carrier Refrigerated Air Conditioner; Drapes and Carpeting; Wet Bar, complete with Marvel Refrigerator; wall paneling, etc.

Matching Reception Suite

60" Walnut Desk with 48" Side Table with posture chair in reception office; (3) Matching Blue Upholstered Arm Chairs; 36"x 36" Corner Table and Lamp; Drapes; Carpets, etc.

Companion Suite

60" Solid Walnut Desk with 66" Side Desk and Blue Upholstered Leather Swivel Arm Chairs; 6 Ft. Upholstered Matching Sofa and (3) Arm Chairs; (2) 30" Coffee Tables; Carrier Refrigerated Air Conditioner; Drapes; Carpeting, etc.

(Note: These offices were decorated by an outstanding interior designer and are all in fine taste with matching pieces.)

IT IS IMPOSSIBLE TO LIST WITH ACCURACY OR DETAIL THE MANY VARIED ITEMS IN THIS STUDIO.

Plan to inspect prior to the auction; be sure to attend this sale—and own a part of the famed Hal Roach Studio.



More Office Machines

Office Furniture

(8) 76" Wood Executive Desks

(6) Metal Office Desks

(100) Wood Office Desks — in Walnut, Mahogany, etc.

(2) 8 ft. Wood Conference Tables with (8) Chairs.

(59) Metal Filing Cabinets, 4-drawer, Letter & Legal with and without locks.

(2) Portable Office Safes: 19"x 28" and 23"x 33"

(8) Telephone Stands; (40) Wood Office Tables; (19) Typewriter Stands.

(15) Leather Davenports and Chairs in Sets.

(90) Assorted Swivel Arm Chairs.

(50) Posture Chairs; (150) Arm Chairs; (60) Straight Back Chairs; (150) Chairs of various types.

(40) Costumers; (20) Book Cases; (100) Mirrors of various types and designs.

Large quantity of Ash Trays, Electric Heaters, Waste Baskets, Letter Trays, Pictures, Pencil Sharpeners, Lamps, End Tables, Coffee Tables, Stools, etc.

Office Machines

IBM Executive Electric Typewriter; Remington Electric Typewriter.

(22) Adler, Royal and Remington Manual Typewriters.

(11) Underwood and Addo-X Adding Machines.

Todd Check Protectograph and Todd Check Writer; Hand Comptometer; Pitney-Bowes Postal Machine; Thermo Fax Copying Machine; Melink Vault Door, 6 1/2 Ft. x 33" (1 hr.); Ditto Copy Machine.



Matched Executive Furniture

New Supplies

LARGE QUANTITY OF:

Nails, Sandpaper, Rings, Snap Hooks, Surface Bolts, Foot Bolts, Tacks, Spring Washers, Machine Screws, Flat Head Bolts, Round Head Bolts, Oval Head Bolts, Stove Bolts, Wood Screws, Door Hardware, Shelf Brackets, Plumbing Supplies, Fire Hose, etc.

Shop Equipment

Literally 100's of assorted work benches, tables, dollies, carts, ladders and general shop tools and equipment too detailed to list individually.

Tool Crib Supplies

Large quantity of Oil Cans, Grease Guns, Files, Mitre Saws, Electric Saws, Electric Sanders, Electric Drills, Electric Screw Drivers.

Wood Clamps, "C" Clamps, Soldering Irons, Staplers, Grinding Wheels, Stock and Die Sets, Hydraulic Jacks, Air Hammers, Tap and Die Sets, Drills, Chucks, Reamers, Bench Vises, Pipe Vises, Blocks, Pulleys, Hand Trucks, Pipe Wrenches, Punch, Shop Heaters, and many other useable items.



Paneling, Bar, Furniture to Go!

7213 Melrose Avenue
Los Angeles 46, California

PLEASE ROUTE:

- ☐ General Manager
- ☐ Sound
- ☐ Props
- ☐ Camera
- ☐ Grip

FIRST CLASS MAIL



San Francisco, Calif.

left no address 3282

- ☐ No return address
- ☐ Return to sender
- ☐ Address unknown



AUCTION! | HAL ROACH MOVIE STUDIOS

4-DAY SALE

AUG. 1-2-3-4

Thurs. - Fri. - Sat. - Sun.

NEARLY 50 YEARS OF MOVIE-MAKING

EQUIPMENT, PROPS,

ANTIQUES - ART

OBJECTS - PIECE by

OBJECTS - PIECE by

PIECE AT AUCTION

8822 WEST WASHINGTON

CULVER CITY (L.A.), CAL.

INSPECTION: WEEKDAYS, 10 A.M. - 4 P.M.
FROM JULY 24 - SUN., JULY 28 - NOON to 4 P.M.



Information Pertaining to Leasing of the New Commercial-Industrial Development at the former Hal Roach Studios may be obtained by writing Mr. Mervyn Kirshner... at Arthur Gilbert and Associates, 9460 Wilshire Blvd., Beverly Hills, Cal., or phone CR. 4-5416



By Order of **LIPSETT DIVISION — LURIA BROS. & CO., INC.**
who will DEMOLISH the STUDIOS after the AUCTION

TOP DOLLAR FOR YOUR ASSETS

Consistently, the Milton J. Wershow Co. sets the pace in converting idle assets into active dollars. Whatever your problem — you are assured that the Wershow organization will plan and conduct your auction or liquidation with energy, thoroughness and experience that will net you added dollars. In the past 29 years, Milton J. Wershow Co. has successfully handled over \$857,750,000.00 in auction, liquidation and negotiated sales and appraisals. Discussions in confidence, without cost or obligation. May we look forward to a call from you?

MILTON J. WERSHOW CO.
7213 MELROSE AVE., LOS ANGELES 46, CALIFORNIA • WE 8-2171
IN THE BAY AREA
1237 THIRD ST. • TE 4-7242
OAKLAND, CALIFORNIA
IN THE NORTHWEST
2130 S.W. 5th AVE. • CA 2-9151
PORTLAND 1, OREGON

One of America's
Foremost Auction Firms

